

  
*Alhair*





*W*  
*W Hair*



*Khair*



— CURTAIN —



double weaving, which reinforce weft to avoid shedding problem, tight and neat

— MATERIAL —



100% pure human hair, cut from one donor without mixing any hair rice, nits, no gray hair.

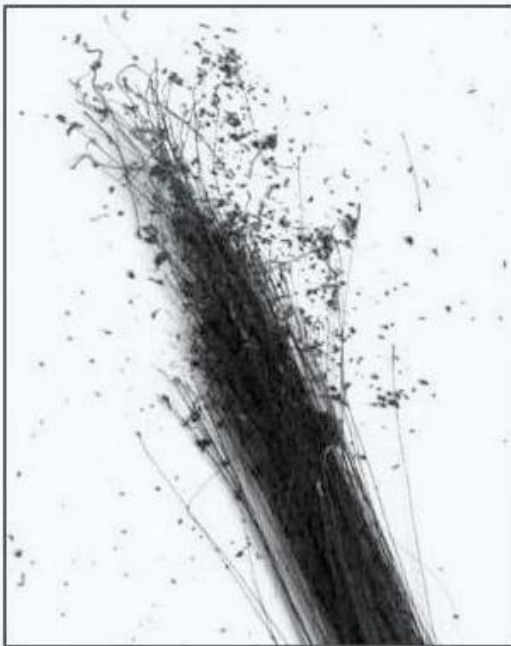
— END —



full length, the same color, thick bottom, no dry end, the tip of our hair is one inch more

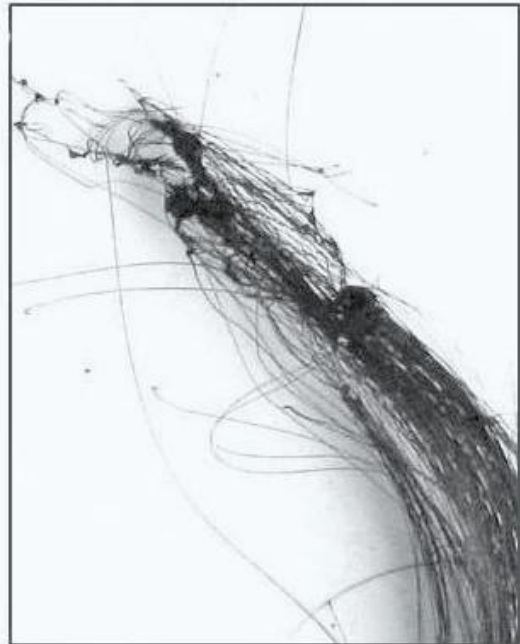
**Burning Test ( To see the difference between synthetic and human hair)**

**Human hair**

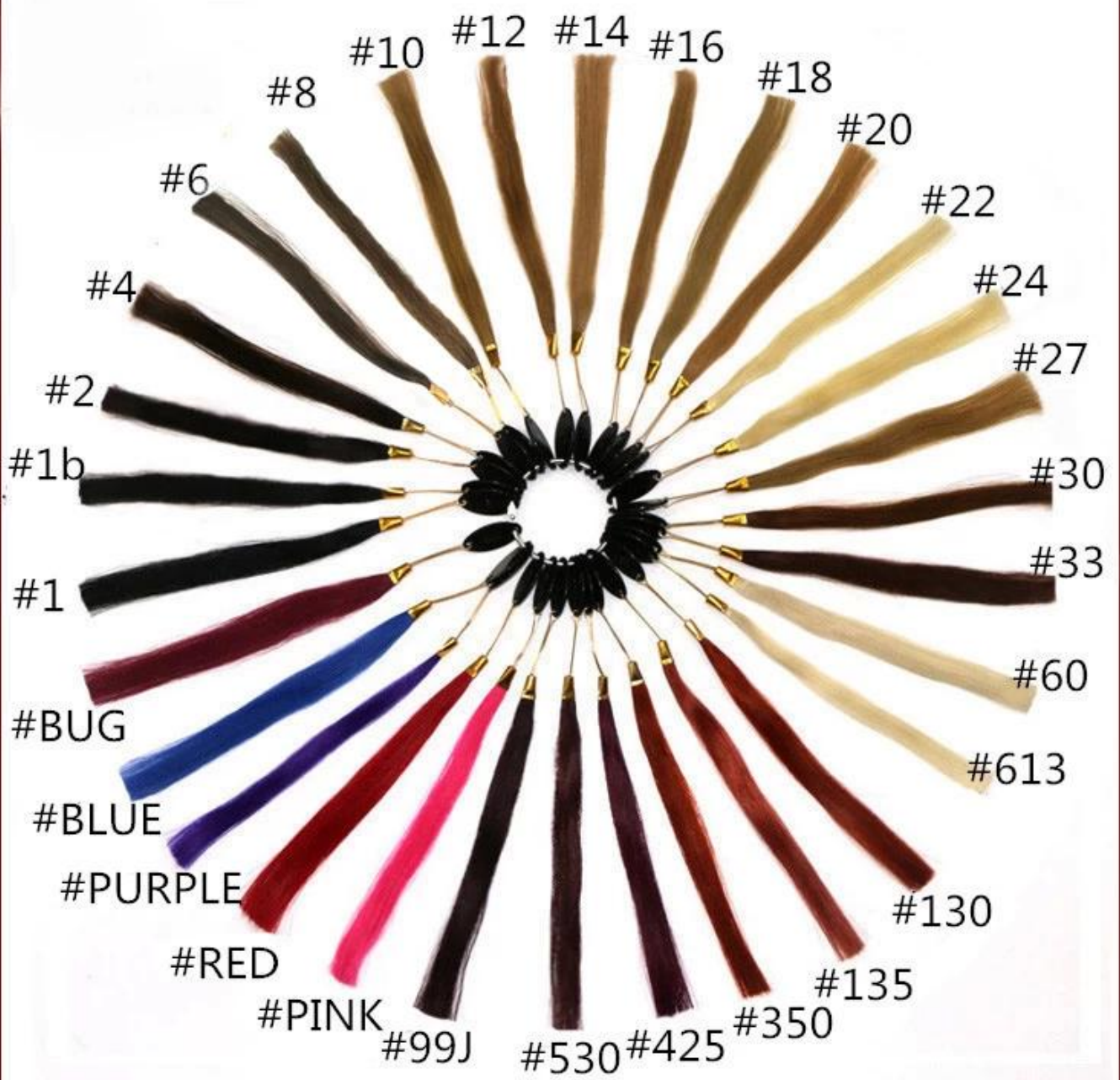


Burning smells like a burnt fragrance , human hair burns out very quickly, and feels like coke. It also easily becomes ash.

**Synthetic**



Burning smells like a burning plastic , there is a small flame, and feels viscous when it burns out.



## *XD-Hair*

*XD-hair products factory produces various hair products , such as weft hair , tape hair , clip in hair , pre-bonded hair and so on . We enjoy high reputation because of advanced skills , high quality , competitive prices , scientific and reasonable designing and completed operation procedure .*

***WELCOME YOUR COMING !!!***







REGION	SHIPPING AGENT	PROCESSING&DELIVERY
US,CANADA	DHL	2-3Days
UK,Western Europe	DHL	3-5Days
Eastern Europe	DHL	3-5Days
Middle East	DHL	3-5Days
Australia,New Zealand	DHL	3-5Days
Asian Countries	DHL	3-5Days
African Countries	DHL	3-5Days
South America	DHL	3-5Days

