

Products Description



Most popular products 2015 100% virgin remy grade russian hair tape hair extensions

Hair Material:	100% virgin human hair
Hair Length:	8" to 36"
Hair Color:	Dark color: #1, #1b #2, #6, # 8, Light color: #27, #613, mixed colors, or as client request
Style:	Straight, body wave, deep wave, water wave, jerry/kinky curl, yaki or according to customer's requests or as pictures.
Weight:	About 100g, 4*0.8cm per piece, 40 pieces per set
Payments:	Small amount: Western Union, Paypal and Money gram Bulk order: Bank T/T
Packing:	small order: pack with plastic bag and cardboard / bulk order: according to your requirements to pack with your brand and logo
Production time	About 5-7 days, according to the quantity

Delivery time:	about 2-5days, by UPS, DHL, Fedex
MOQ:	1 Set (Welcome order sample to Check our Quality)

Tangle Test



Restle Test



Shedding Test



Washing Test & Hair Care

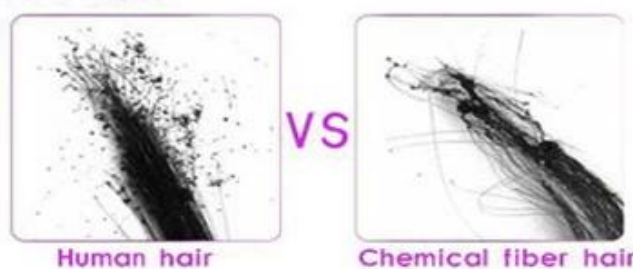


1. Wash the hair in one week, use mild shampoo, rinse and leave to dry.
2. Come with a wire brush after dry, the round with wide-toothed comb.
3. Don't make sure hair under the blazing sun for quite a long time.
4. Don't blows the root of hair too near with hair drier.
5. To daily hair caring, please spary the hydrating drops regularly, otherwise the hair will become dry, tangle and shedding

Dyeing Test



Burn Test



Burnig smells like a burnt fragrance, Human hair burns out very quickly, is also easily becomes ash.





AUTHORIZED CERTIFICATION



国家发制品及护发用品质量监督检验中心 National Hair Products And Hair Care Products Quality Supervision And Inspection Center 检验报告 Inspection Report

No.20110206

第 2 页 共 4 页
Page 2 of 4

产品名称(Sample): 人发发套 (Human Hair Weaving)			规格型号(Model): 14"(1+ inch)			
序号 Serial No.	检验项目 Items	计量单位 Unit	标准要求 Requirements	检测结果 Results	判定结论 Conclusions	备注 Remarks
1	人发含量 (Human Hair Content)	%	≥98	100	合格 (Qualified)	/
2	甲醛 (Formaldehyde)	mg/kg	≤15	5	合格 (Qualified)	/
3	异味 (Off-flavor)	/	无异味 (None)	符合 (conform)	合格 (Qualified)	/
4	pH值	/	4.0~9.0	8.0	合格	/






国家发制品及护发用品质量监督检验中心 检验报告 Inspection Report	
产品名称(Sample): 人发发套 (Human Hair Weaving)	规格型号(Model): 14"(1+ inch)
序号 Serial No.	检验项目 Items
1	人发含量 (Human Hair Content)
2	甲醛 (Formaldehyde)
3	异味 (Off-flavor)
4	pH值

国家发制品及护发用品质量监督检验中心 检验报告 Inspection Report	
产品名称(Sample): 人发发套 (Human Hair Weaving)	规格型号(Model): 14"(1+ inch)
序号 Serial No.	检验项目 Items
1	人发含量 (Human Hair Content)
2	甲醛 (Formaldehyde)
3	异味 (Off-flavor)
4	pH值



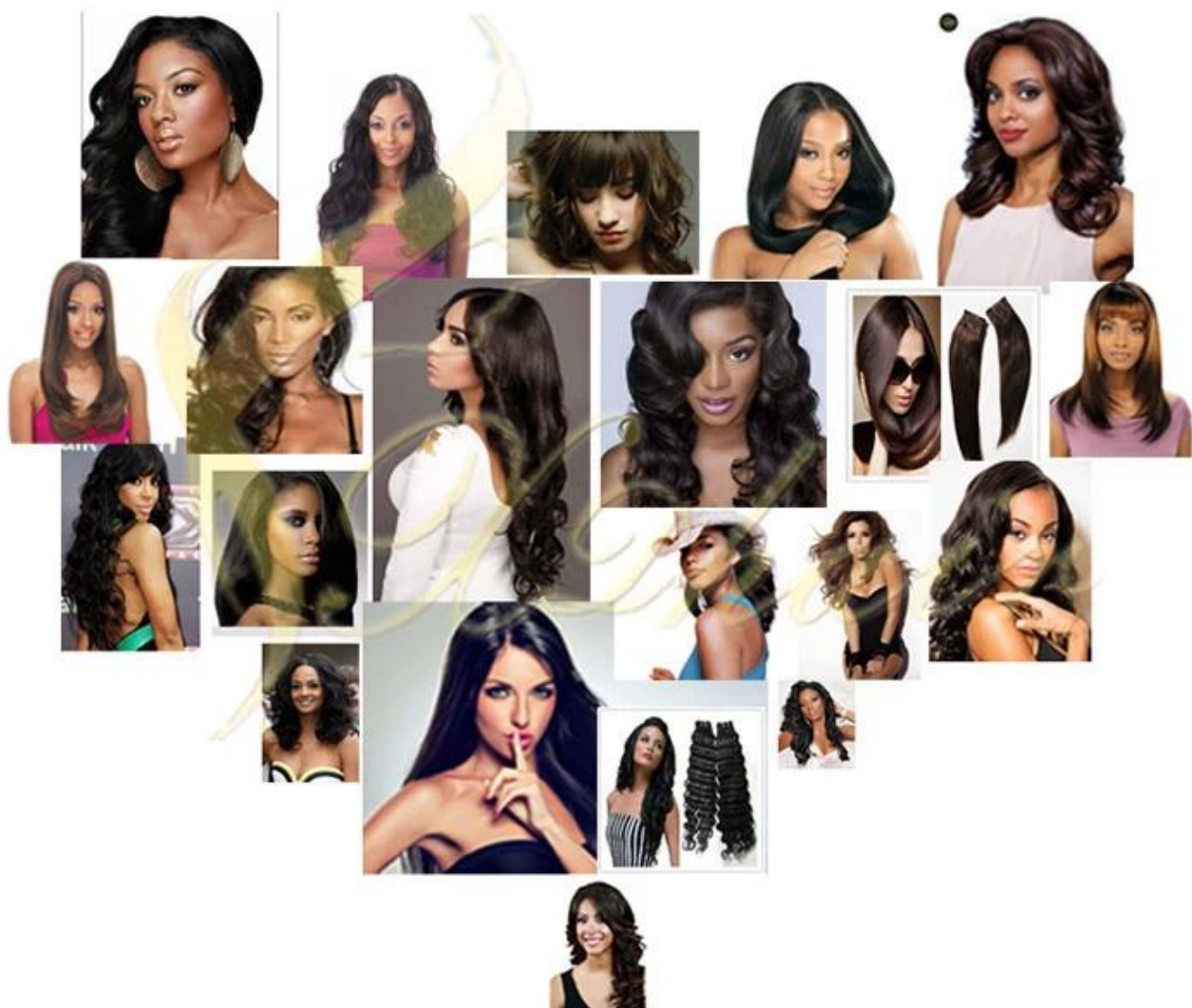
Shipping





USA, Canada	3-5 days
UK,IR,West European	3-5 days
East European	3-5 days
Middle East	3-5 days
Australia,New Zealand	3-4 days
Asia country	2-3 days
Africa country	4-7 days
South america	4-7 days

Free Shipping, Order Will Be Posted By DHL Or UPS Usually.
Normally Item Will Arrive Within 3-7 Working Day After Being Posted.



FAQ

Q 1: What's Virgin Hair ?



Raw Material



Virgin Hair



No Dyed



No Acid Bath

Q 2: Why Are My Hair Extensions Getting Tangle ?

A: Your Hair Extensions can tangle due to dryness, oil & dirt build-up, salt water, chlorine and not combing (wide tooth comb) out your hair daily
Make sure to wash & condition your hair at least once a week, twice a week is better. Use hydrating drops or consult your stylist for more help.

Q 3: Why Are My Hair Extensions Getting Shedding ?

A: Firstly, PLS running the with your finers or Wide-toothed gently, to prevent the shedding. For curly hair, pls don't use the comb.

Secondly, After wash pls nurse the hair with some hair oil, then the hair will be silk and soft.



After Washing The Hair, please Nurse With Some Hair Oil, then The Hair Will Be Silky And Soft.



Choose The Wide-toothed Comb; Comb It Gently, so As To Prevent Shedding.



Too Much Heat May Damage The Hair.

Q 4: Could The Hair Be Dyed And Iron-flat ?

A: It is virgin hair, so could be dyed and iron-flat, iron flat pls don't exceed 150C, or the hair will be destroyed. Also the hair will come back to its natural wavy after you wash it or iron-flat.

Q 5: How Many Bundles For A Full Head ?

A: Here are the picture in the length between difference Texture.

Straight

Wavy

Curly



Length (Inch)	12"	14"	16"	18"	20"	22"	24"	26"	28"	30"
	20cm	35cm	40cm	45cm	50cm	55cm	60cm	70cm	75cm	80cm
One Standard Head (Bundle)	2	2	3	3	3	3	4	4	4	4